



Manteca

General Plan Update

Environmental Justice Stakeholders Meeting

April 21, 2021

DE NOVO PLANNING GROUP



Meeting Agenda



- Presentation
 - General Plan Overview
 - Environmental Justice & State General Plan Requirements
 - Approach to Addressing Environmental Justice in the General Plan Update
 - Next Steps
- Questions/Comments/Recommendations

General Plan Overview



- The General Plan implements the community's vision and goals for Manteca and serve as the City's "playbook" for future planning decisions, including:
 - Land Uses (residential, commercial, industrial, business parks, open space, etc.)
 - Infrastructure Planning (roads, water, sewer, etc.)
 - Public Services (police, fire, parks, libraries, cultural activities, etc.)
 - Resource Conservation (clean air, sensitive habitat, waterways, groundwater, etc.)

General Plan Elements

- Land Use
- Growth Management
- Circulation
- Community Design
- Economic Development
- Community Facilities & Services
- Resource Conservation
- Safety
- Housing
- Implementation



General Plan Update Process



Community Participation

Visioning: Identify Community Priorities

✓ Complete: 2017

Existing Conditions Report

✓ Complete: October 2017, Rev. May 2019

GPAC: General Plan Goals, Policies, and Programs

✓ Complete: August 2017-March 2019

Land Use Alternatives/ Preferred Map

✓ Complete: July 2019

Draft General Plan Update

← Public Review

Environmental Impact Report

← Public Review

Public Hearings: General Plan and EIR



General Plan Elements

Manteca General Plan Elements	Elements Required by State Law									Optional
	Land Use	Circulation	Conservation	Open Space	Noise	Safety	Environment al Justice	Air Quality	Housing	
2. Land Use	■						■			
3. Growth Management										■
4. Circulation		■					■			
5. Community Design							■			■
6. Economic Development							■			■
7. Community Facilities & Services							■			■
8. Resource Conservation			■	■			■	■		
9. Safety					■	■	■			
10. Housing							■		■	
11. Implementation										■

Environmental Justice and General Plans

Environmental justice is the fair treatment and meaningful involvement of people of all races, cultures, incomes, and national origins, with respect to the development, adoption, implementation, and enforcement of environmental laws, regulations, and policies.

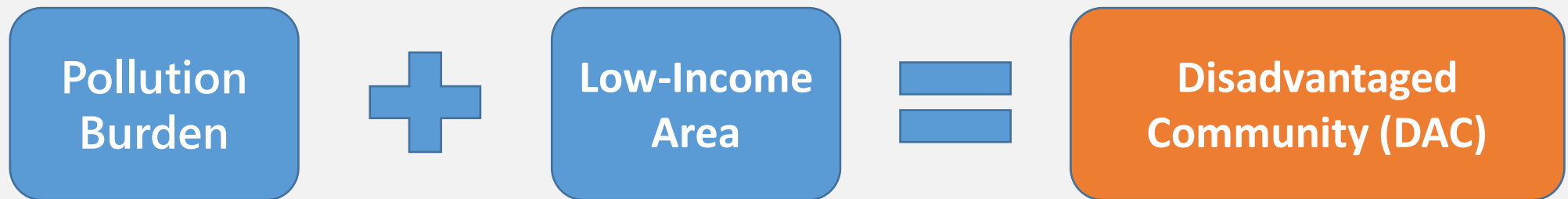
*California Government Code Section
65040.12(E)*

- Reduce unique and compounded health risks in disadvantaged communities, including through policies and programs to:
 - Improve air quality
 - Promote public facilities
 - Promote food access
 - Promote safe and sanitary homes
 - Promote physical activity
- Engage the community in decision-making
- Prioritize improvements and programs that address needs in disadvantaged communities

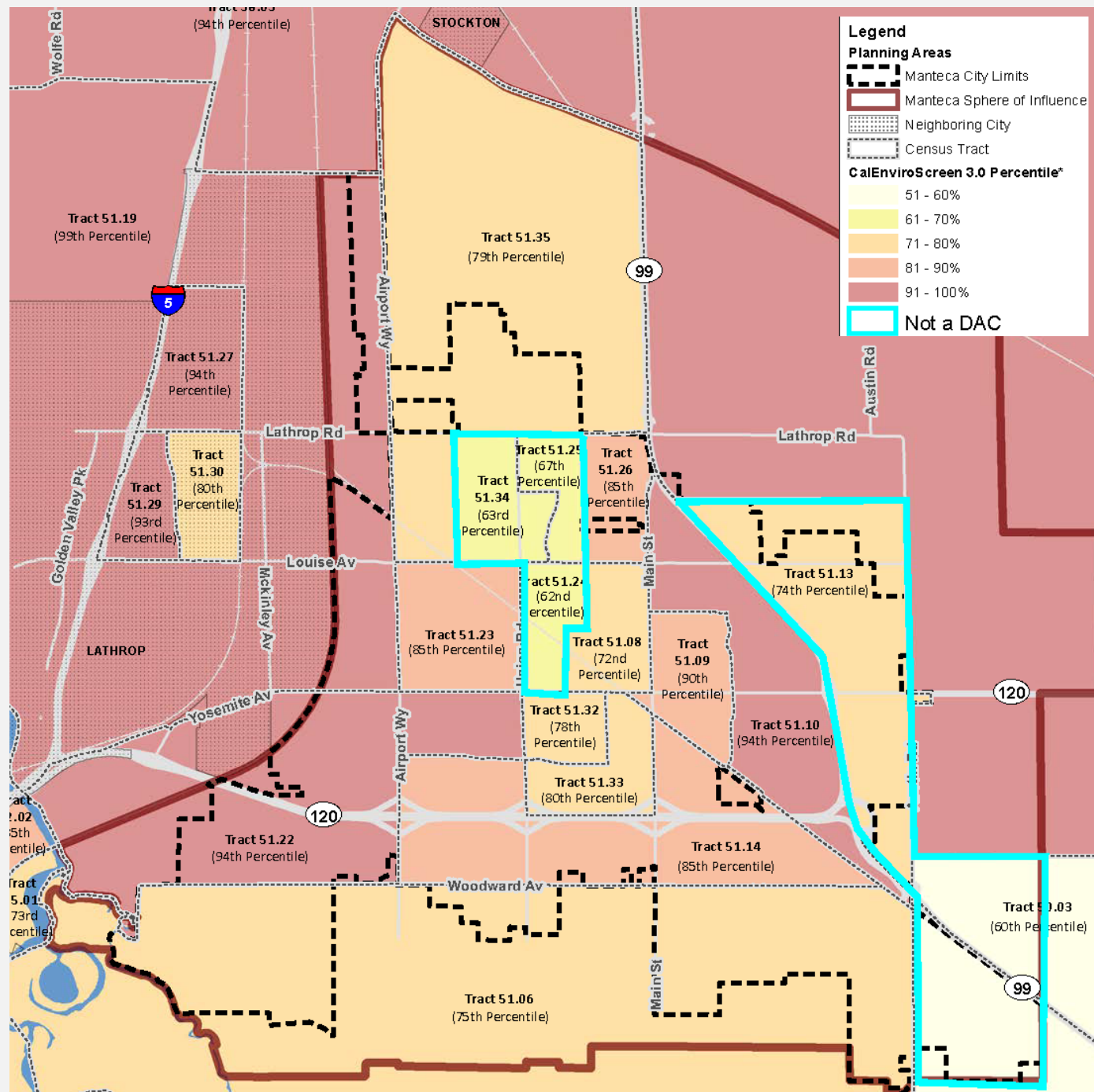


Disadvantaged Communities (DACs)

“Disadvantaged community” means an area identified by the California Environmental Protection Agency pursuant to Section 39711 of the Health and Safety Code or an area that is a low-income area that is disproportionately affected by environmental pollution and other hazards that can lead to negative health effects, exposure, or environmental degradation.



DACs in Manteca



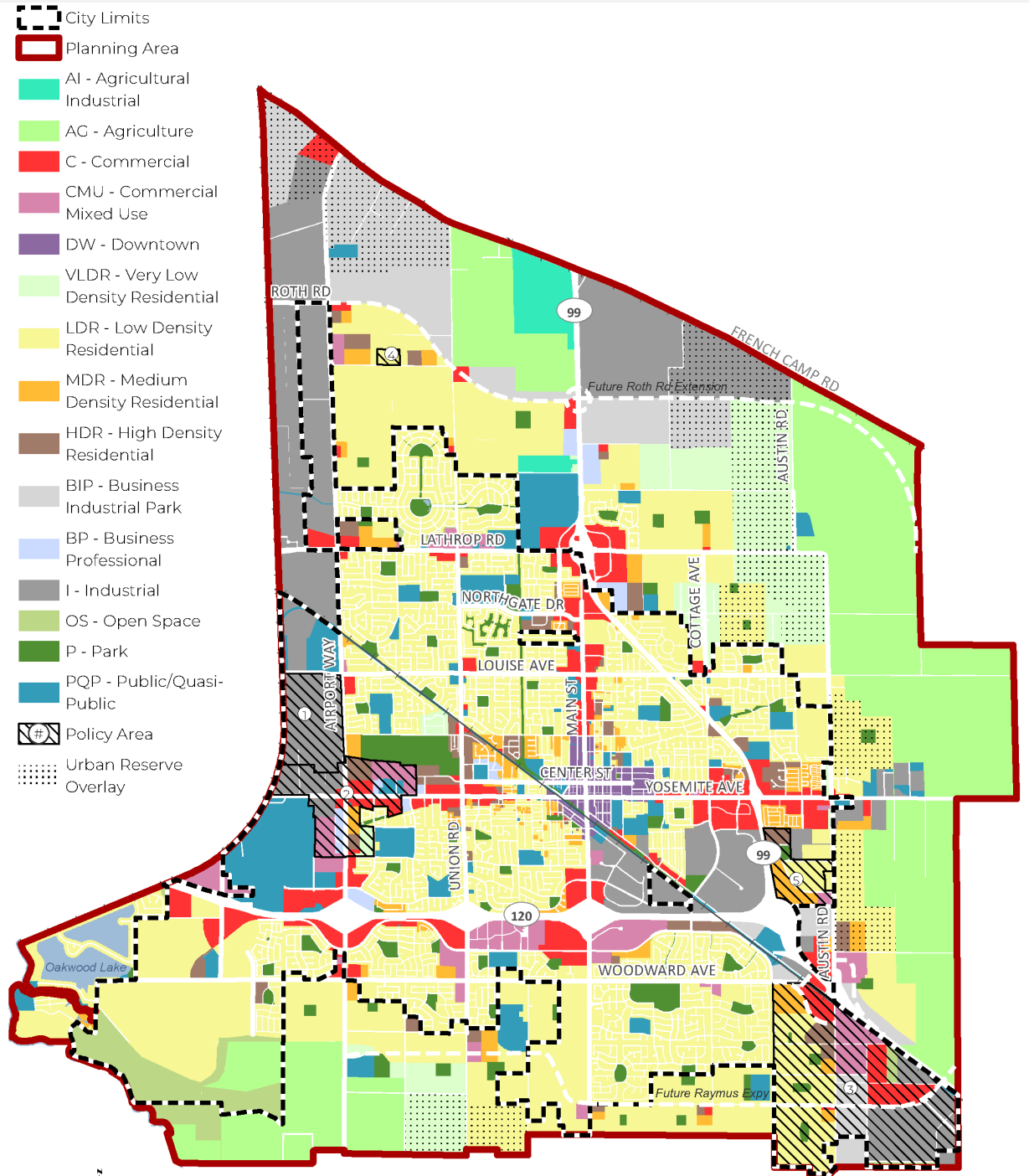
Census Tract	Pollution	Health/Socio-economic
38.03	100	61
51.35	96	51
51.19	100	79
51.31	98	74
51.34	43	71
51.25	40	80
51.24	52	62
51.26	64	91
51.31	98	74
51.13	78	62
51.22	98	70
51.14	95	62
51.32	68	76
51.33	84	65
51.06	77	98
50.03	90	35
50.04	92	30



Approach to Environmental Justice



Land Use Map



Address DAC Needs

Goal LU-9

Create an environmentally just city with an equitable distribution of public facilities and services, a safe and healthy environment, including access to healthy foods, recreation and activity, and public services, and opportunities for public input for all community members.

- **Land Use Element Policy LU-9.1:** Require future planning decisions, development, and infrastructure and public projects to consider the effects of planning decisions on the overall health and well-being of the community and its residents, with specific consideration provided regarding addressing impacts to disadvantaged populations and communities and ensuring disadvantaged communities have equitable access to services and amenities.
- **Land Use Element Measure LU-9a:** *Review all development proposals, planning projects, and infrastructure projects to ensure that potential adverse impacts to disadvantaged communities, such as exposure to pollutants, including toxic air contaminants, and unacceptable levels of noise and vibration are reduced to the extent feasible and that measures to improve quality of life, such as connections to bicycle and pedestrian paths, community services, schools, and recreation facilities, access to healthy foods, and improvement of air quality are included in the project. The review shall address both the construction and operation phases of the project.*

Reducing Health Risks – Air Quality/Pollution

- **Land Use Element** Policy LU-9.2: As part of land use decisions, ensure that environmental justice issues related to potential adverse health impacts associated with land use decisions, including methods to reduce exposure to hazardous materials, industrial activity, vehicle exhaust, other sources of pollution, and excessive noise on residents regardless of age, culture, gender, race, socioeconomic status, or geographic location, are considered and addressed.
- **Resource Conservation Element** Goal RC-6, Policies RC-6.1 through 6.5, and measures RC-6a through RC-6f protect the health and welfare through promoting compatibility with air quality standards and reducing risks associated with exposure to air pollutants, including exposure of pollutants and toxic air contaminants associated with high-intensity uses (industrial, highways, rail lines, etc.) to residents and sensitive receptors.
- **Safety Element** Goal S-4, Policies S-4.1 through 4.4 and measures S-4a through S-4h reduce risks related to exposure to hazardous materials.



Reducing Health Risks – Public Facilities

- **Land Use Element Policy LU-9.3:** When planning for parks, recreational facilities, community gardens, schools, civic facilities, and other uses that improve the quality of life, ensure that environmental justice issues related to the equitable provision of desirable public amenities are considered and addressed.
- **Land Use Element Policy LU-9.5:** Support existing health care services and encourage the location of new health care facilities and medical services, particularly in disadvantaged areas, areas with a high rate of special needs populations, and in underserved residential areas. Encourage new facilities to be located in areas that are readily accessible by pedestrians and bicyclists and served by transit.
- The **Community Facilities Element** ensures that facilities and services are provided to serve new growth and that high-quality services are provided to all residents in the City, including ensuring that expansion of services does not place an economic burden on existing residents and service levels for existing uses are not degraded or impaired.

Reducing Health Risks – Food Access

- **Land Use Element Policy LU-9.7:** Encourage convenience stores, supermarkets, liquor stores, and neighborhood markets to stock nutritional food choices, including local produce, local meats and dairy, 100% juices, and whole-grain products.
- **Land Use Element Policy LU-9.8:** Encourage sustainable local food systems including farmer's markets, community gardens, edible school yards, community supported agriculture, neighborhood garden exchanges, federal food assistance programs, and healthy food retailers.
- **Land Use Element Policy LU-9.9:** Encourage and support the continued year-round operation of farmers' markets and local fruit and vegetable stands.
- **Land Use Element Policy LU-9.10:** Support schools and other organizations' efforts to encourage students and their families to make healthy food choices through providing fresh, nutritious lunches and providing students and their families access to fresh fruits and vegetables through "edible school yards", holiday meal programs, and sustainable gardening programs.
- **Land Use Element Measure LU-9e:** *Encourage community gardens near high-density housing and encourage the incorporation of community gardens into new and existing high-density housing projects.*
- **Land Use Element Measure LU-9f:** *Encourage schools that serve the City to develop school gardens and to develop protocols to facilitate the streamlined development of school gardens from year to year.*



Reducing Health Risks – Safe, Sanitary Housing

- **Land Use Element Goal LU-3:** Establish and maintain residential neighborhoods that meet the housing needs of all residents and are safe and attractive places to live with convenient access to services, recreation, schools, and employment.
- The **Housing Element** identifies the City's plan for development, preservation, and maintenance of housing that is affordable at a range of income levels and provides for a variety of housing types. The Housing Element includes goals, policies, and programs that address:
 - Development of affordable housing
 - Infill and Downtown residential development
 - A range of housing types, densities, and designs to meet existing and projected housing needs for all economic segments
 - Maintenance and improvement of existing housing and neighborhoods
 - Provision of adequate housing opportunities for special needs groups
 - Promote equal opportunity for safe and affordable housing for everyone in the community

Note: The Housing Element is on a separate planning cycle and will be updated in accordance with State requirements.



Reducing Health Risks – Physical Activity

- **Land Use Element** Policy LU-9c: Encourage and support local transit service providers to increase and expand services for people who are transit-dependent, including seniors, persons with mobility disabilities, and persons without regular access to automobiles by improving connections to regional medical facilities, senior centers, and other support systems that serve residents and businesses.
- **Land Use Element** Policy LU-9d: When updating plans for parks, recreation, and community services and amenities, identify and prioritize programs and actions that would provide for equitable access to and distribution of such facilities and amenities.
- **Community Facilities & Services Element** Goal CF-4, Policies 4.1 through 4.15, and Measures CF-4a through CF-4h promote provision of parks, trails, recreation facilities, and recreation programs that meet the needs of all segments of the community.



Civic Engagement

- **Land Use Element Policy LU-9.4:** Promote broad and balanced participation to ensure that affected residents have the opportunity to participate in the decision-making process, including in decisions that affect their health and well-being such as planning, roadway, parks, infrastructure, and utility projects.
- **Land Use Element Policy LU-9b:** Review the City's community outreach programs and public notice requirements to encourage broad-based and meaningful community participation in decisions. The review should address providing measures to promote capacity-building, encourage participation from populations that may have language, health, or other barriers that may reduce their involvement in the decision-making process, and maximize use of technology broaden opportunities for participation.

Next Steps

- Public Review Draft General Plan and General Plan Draft EIR: Comment period closes **May 6, 2021**.
- **April 27 and May 11, 2021:** Planning Commission/City Council Joint Workshops on Public Review Draft General Plan
- **June 2021:** Adoption Draft General Plan and Final EIR
- **Summer 2021:** Public Hearings to Consider Certification of the EIR and adoption of the General Plan update
 - Planning Commission
 - City Council



Input

- Questions
- Comments
- Recommendations

